



Websters
estate agents

Norcutt Road, Twickenham, TW2 6SR

Mid Terrace 3 bedroom Victorian family home in a popular residential area just 0.2 miles from Twickenham Green, local shops, cafes and restaurants and only 0.7 miles from Strawberry Hill and Twickenham mainline train stations.

Extended at the rear on the ground and first floor and loft converted to offer 952 sq ft of well balanced living space over 3 floors with a high specification fixtures, fittings, wood flooring, period features, double glazed sash windows, built in storage and tasteful modern decor throughout.

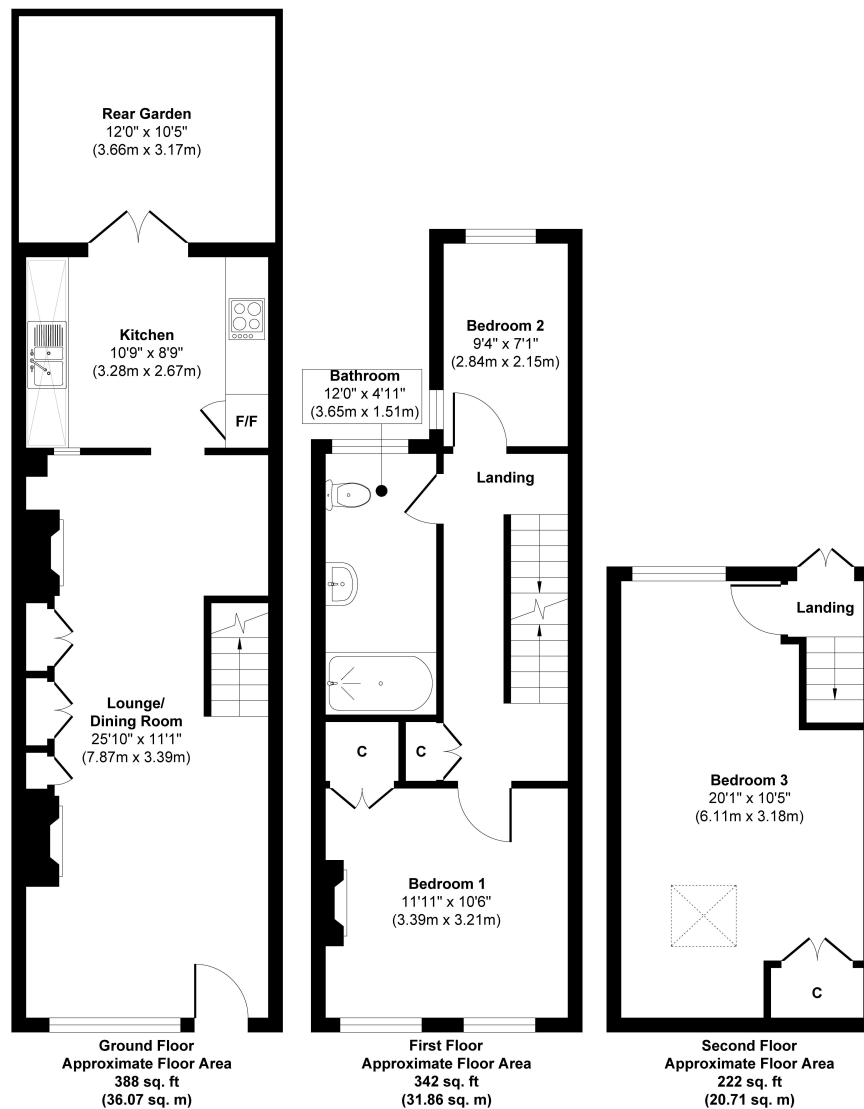
Front door opens into the spacious living room with feature fireplaces, space for seating and dining and access to the kitchen at the rear. This light filled room has a tiled floor, stylish fitted units, part glass roof and doors opening onto the low maintenance courtyard garden with gated rear access. On the first floor are 2 bedrooms, built in storage, the family bathroom and stairs upto the third bedroom with a study area, eaves storage and juliet balcony in the hallway.

Located 0.3 miles from Archdeacon and TPA, 0.6 miles from Trafalgar Primary and St Richard Reynolds School and within 0.7 miles of Twickenham town centre, Church Street and Twickenham Riverside with a towpath walk along the Thames past Marble Hill Park to Richmond.

EPC Rating D

- Mid Terrace 952 Sq Ft Victorian Home
- 3 Bedrooms and a Large Family Bathroom
- Extended and Loft Converted
- High Specification Throughout
- Popular Residential Location
- Within 0.6 Miles of Popular Schools
- 0.7 Miles from Twickenham and Strawberry Hill Stations





Approx. Gross Internal Floor Area 952 sq. ft / 88.64 sq. m

Illustration for identification purposes only, measurements are approximate, not to scale.
Produced by Elements Property

a Websters Estate Agents 36 Broad Street, Teddington, Middlesex TW11 8QY

t 020 8614 6000

e sales@mywebsters.co.uk **w** mywebsters.co.uk

Disclaimer

These particulars, whilst believed to be accurate are set out as a general outline only for guidance and do not constitute any part of an offer or contract. Intending purchasers should not rely on them as statements of representation of fact, but must satisfy themselves by inspection or otherwise as to their accuracy. We have not carried out a detailed survey nor tested the services, appliances and specific fittings. Room sizes should not be relied upon for carpets and furnishings. The measurements given are approximate. No person in this firm's employment has the authority to make or give any representation or warranty in respect of the property.

