



Websters
estate agents

Staines Road, Twickenham, TW2 5BG

Mid Terrace 2 double bedroom Victorian Cottage less than 0.1 mile from Twickenham Green, local shops, bars and restaurants and less than 0.3 miles from Trafalgar and Archdeacon Cambridge Primary Schools and Kneller Gardens with a towpath cycle/footpath along the river Crane to Crane Park.

Refurbished by the current owners to offer 709 sq ft of living space over 2 floors with high specification fixtures, fittings and flooring, a new boiler, central heating, electrics and double glazed windows and pleasing neutral decor throughout.

Front door opens to the dual aspect living/dining room with wood flooring and access to the fitted kitchen and family bathroom at the rear. Double doors in the living room open onto the south facing garden. On the first floor are 2 double bedrooms, built in wardrobes and hatch access to loft storage.

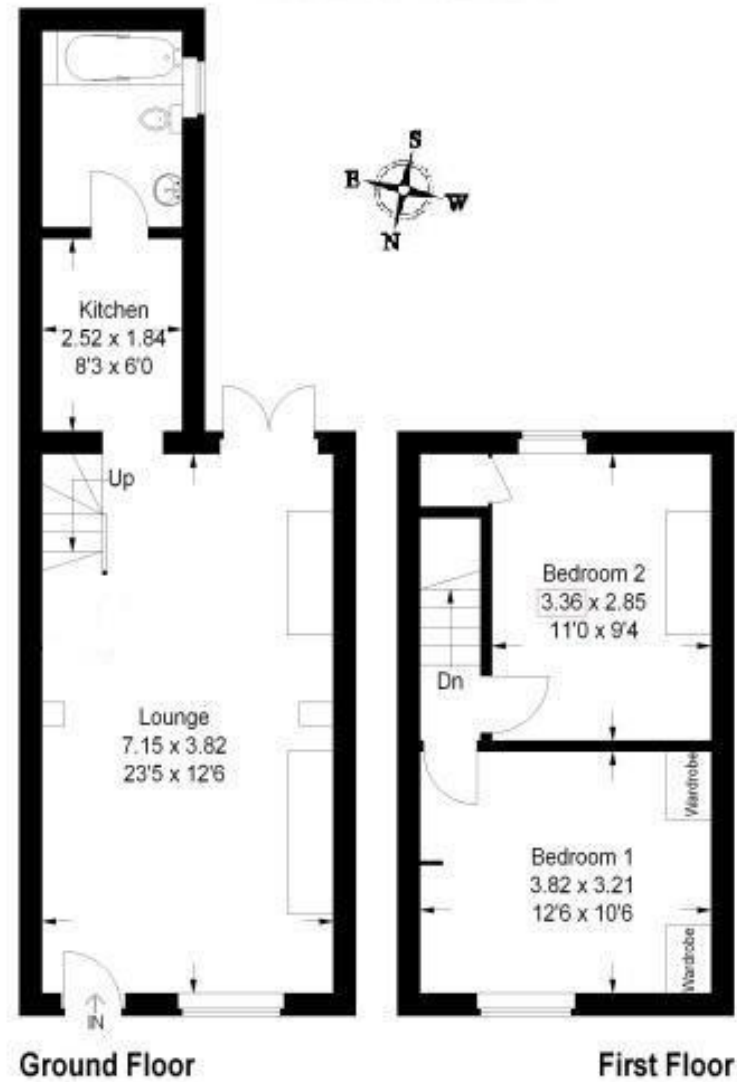
Located just 0.6 miles from Strawberry Hill village shops and train station and Twickenham town centre and 0.5 miles from Waldegrave Girls School/Co-ed Sixth Form.

EPC Rating E

- Mid Terrace Victorian Cottage
- 2 Double Bedrooms
- Refurbished by the Current Owners
- South Facing Garden
- New Double Glazed Windows and Doors
- Twickenham Green Location
- 0.6 Miles from Strawberry Hill Station



Staines Road



Approx . Gross Internal Area
65.9 sq m / 709 sq ft

a Websters Estate Agents 164 Heath Road, Twickenham, Middlesex TW1 4BN t 020 8892 3343 e sales@mywebsters.co.uk w mywebsters.co.uk

Disclaimer

These particulars, whilst believed to be accurate are set out as a general outline only for guidance and do not constitute any part of an offer or contract. Intending purchasers should not rely on them as statements of representation of fact, but must satisfy themselves by inspection or otherwise as to their accuracy. We have not carried out a detailed survey nor tested the services, appliances and specific fittings. Room sizes should not be relied upon for carpets and furnishings. The measurements given are approximate. No person in this firm's employment has the authority to make or give any representation or warranty in respect of the property.

