



14

12

10

Websters
estate agents
Sold

Websters
estate agents

Norcutt Road, Twickenham, TW2 6SR

End of Terrace 2 bedroom Victorian family home in a popular residential area just 0.2 miles from Twickenham Green, local shops, cafes and restaurants and only 0.7 miles from Strawberry Hill and Twickenham mainline train stations.

Tastefully presented to offer 693sq ft of living space over 2 floors with modern fixtures, fittings and floorings, double glazed windows and doors and potential to loft convert (subject to Planning Permission and Building Regulations)

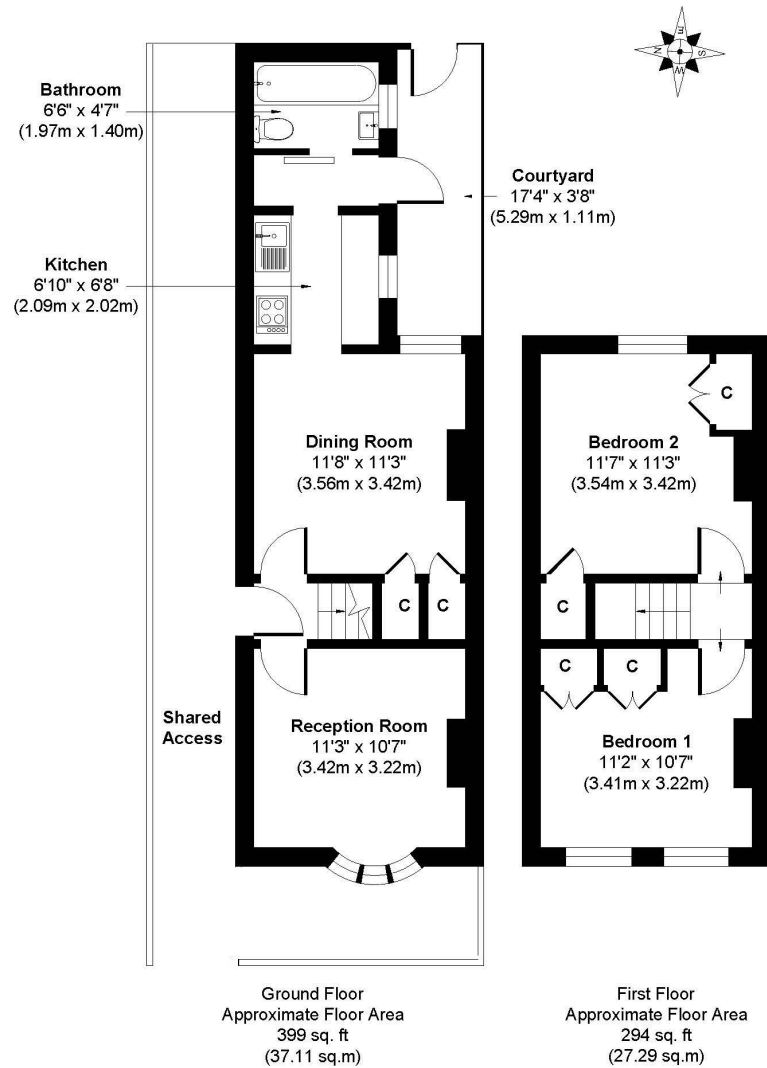
Front door at the side of the property opens to the hallway with doors to the bay fronted living room at the front and the dining room with access to the kitchen and family bathroom at the rear. A door at the side opens onto the paved courtyard garden with gated rear access. On the first floor are 2 double bedrooms with built in cupboards and hatch access to loft storage.

Located 0.3 miles from Archdeacon and TPA, 0.6 miles from Trafalgar Primary and St Richard Reynolds School and within 0.7 miles of Twickenham town centre, Church Street and the riverside with a walking/cycle track along the Thames past Marble Hill Park to Richmond. EPC Rating D

- End of Terrace Victorian Home
- 2 Double Bedrooms
- Potential to Loft Convert (stpp)
- 2 Living Rooms and Kitchen
- 693 Sq Ft of Living Space over 2 Floors
- Close to Popular Schools
- Within 0.7 Miles of Twickenham and Strawberry Hill Stations



Norcutt Road, TW2



Approx. Gross Internal Floor Area 693 sq. ft / 64.40 sq. m

a Websters Estate Agents 36 Broad Street, Teddington, Middlesex TW11 8QY t 020 8614 6000 e sales@mywebsters.co.uk w mywebsters.co.uk

Disclaimer

These particulars, whilst believed to be accurate are set out as a general outline only for guidance and do not constitute any part of an offer or contract. Intending purchasers should not rely on them as statements of representation of fact, but must satisfy themselves by inspection or otherwise as to their accuracy. We have not carried out a detailed survey nor tested the services, appliances and specific fittings. Room sizes should not be relied upon for carpets and furnishings. The measurements given are approximate. No person in this firm's employment has the authority to make or give any representation or warranty in respect of the property.

