



**PITSHANGER LANE
W5**
.....
£470,000 - Fixed Price
Pitshanger



PITSHANGER LANE, W5

£470,000 - Fixed price



Reception Room



Kitchen



Three Bedrooms



Bathroom



On Street

A lovely three bedroom first floor Edwardian mansion apartment with high ceilings, large windows and an abundance of period charm. This spacious (872 sq.ft) apartment has been comprehensively refurbished throughout, blending modern tasteful fittings with original Edwardian features. Located to the rear of the property there's a private southerly aspect balcony.

Kenmure Mansions is conveniently located on Pitshanger Lane's Award Winning High Street, with its excellent local amenities including a variety of local shops, restaurants, good primary schools, Pitshanger Park and local bus services to Ealing Broadway.

EPC RATING: D

LOCAL AUTHORITY: London Borough of Ealing

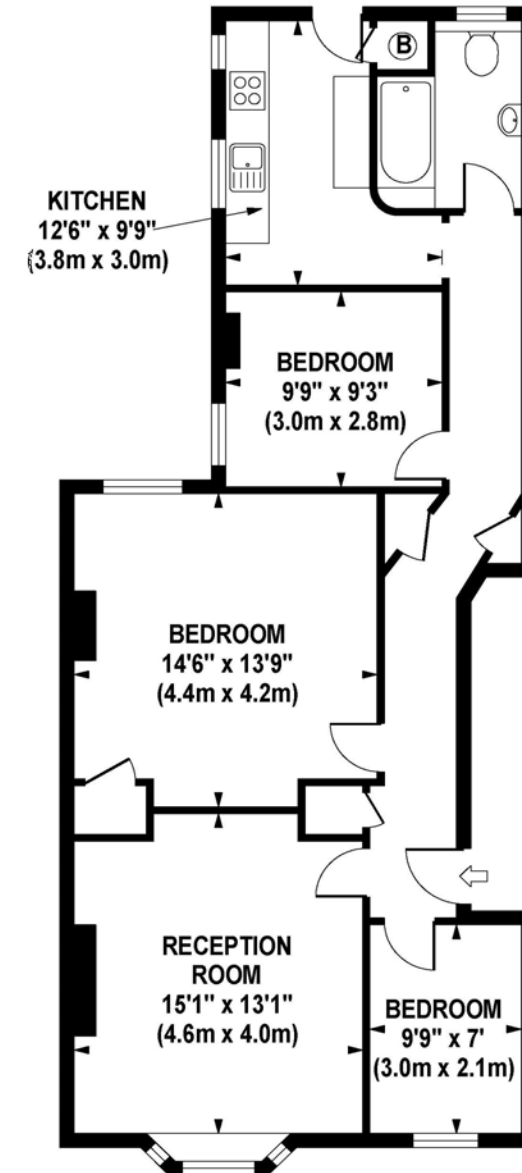
COUNCIL TAX BAND: D

LENGTH OF LEASE: 24 June 1981 to and including 23 June 2170

You may wish to instruct us about a related service, including: the sale and letting of residential and commercial property, the provision of mortgage and financial services, conveyancing and property management. Where you choose to use other services, Northfields or its employees may receive a fee or commission which will be disclosed to you.

KENMURE MANSIONS

Approximate Gross Internal Area 872 sq ft / 81.0 sq m



FIRST FLOOR
GROSS INTERNAL
FLOOR AREA 872 SQ FT

Although every attempt has been made to ensure accuracy, all measurements are approximate. The floor plan's for illustrative purposes only and not to scale. Measured in accordance to RICS standards.

Your local independent award winning estate agents



Pitshanger

1 Albert Terrace
Ealing
London W5 1RL
Sales: 020 8998 3111
E: pitssales@northfields.co.uk

020 8998 3111

www.northfields.co.uk

CONTACT

Us today

TO FIND OUT

MORE