



Websters
estate agents

Richmond Road, Twickenham, TW1 3DA

Third Floor 3 double bedroom apartment in a highly regarded, purpose built mansion block with secure entry phone access, lifts to all floors, on-site porter, communal gardens and unallocated residents parking. Situated just 0.2 miles from popular Church Street shops, bars and restaurants and the River Thames with a fabulous towpath walk through Orleans Gardens and Marble Hill Park to Richmond upon Thames

With no onward chain, heating and hot water included in the service charge and immaculately presented to offer 904 sq ft of well proportioned and adaptable living space with modern fixtures and fittings, double glazed windows, newly fitted carpets and pleasing neutral decor throughout.

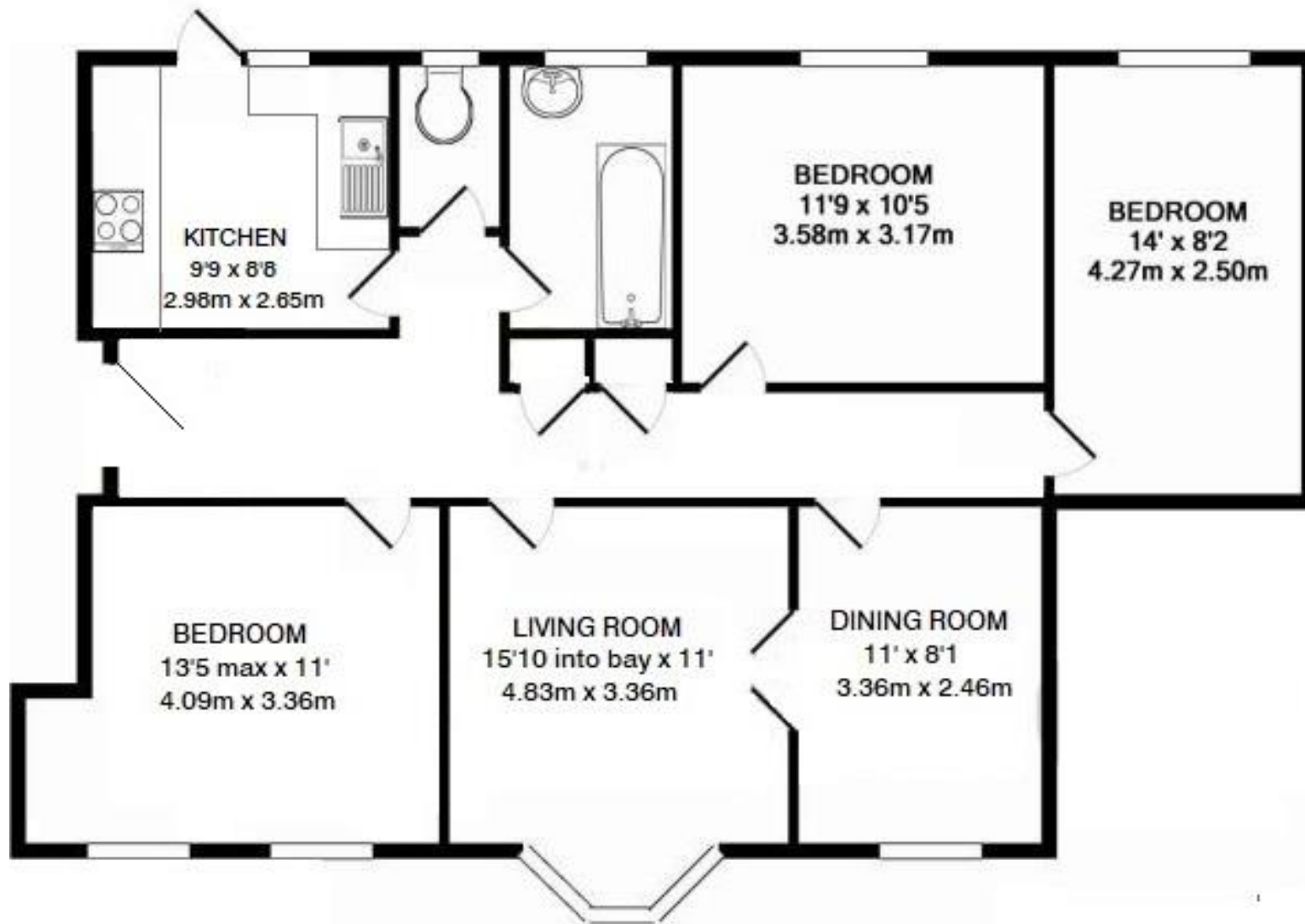
Entrance hallway leads to built in storage, 3 double bedrooms, the bathroom, separate w.c, the bay fronted living room with double doors into the dining room/study and the separate kitchen with stylish fitted units, appliances, wood worktops and a door opening to a small balcony with an external staircase leading down to communal areas.

Located less than 0.4 miles from Twickenham town centre and mainline train station and just 0.6 miles from St Margarets Village and train station.

EPC Rating F

- Large Third Floor 3 Bedroom Apartment
- 904 Sq Ft of Living Space
- No Onward Chain
- Lift Access to All Floors
- Living Room, Dining Room and Seperate Kitchen
- Within 0.2 Miles of River Thames
- 0.4 Miles from Twickenham Station





THIRD FLOOR

TOTAL APPROX FLOOR AREA 904 SQ FT (84 SQ M)

[a](#) Websters Estate Agents 164 Heath Road, Twickenham, Middlesex TW1 4BN [t](#) 020 8892 3343 [e](#) sales@mywebsters.co.uk [w mywebsters.co.uk](http://mywebsters.co.uk)

Disclaimer

These particulars, whilst believed to be accurate are set out as a general outline only for guidance and do not constitute any part of an offer or contract. Intending purchasers should not rely on them as statements of representation of fact, but must satisfy themselves by inspection or otherwise as to their accuracy. We have not carried out a detailed survey nor tested the services, appliances and specific fittings. Room sizes should not be relied upon for carpets and furnishings. The measurements given are approximate. No person in this firm's employment has the authority to make or give any representation or warranty in respect of the property.

