



VICTORIA ROAD  
W5

£445,000

Pitshanger





VICTORIA ROAD, W5  
£445,000



Reception Room



Kitchen



Two Bedrooms



Two Bathroom



Allocated

A bright and spacious two bedroom two bathroom first floor flat with a separate kitchen. The property is being sold with a share of freehold and allocated parking. Essan House is a small and well maintained purpose built development.

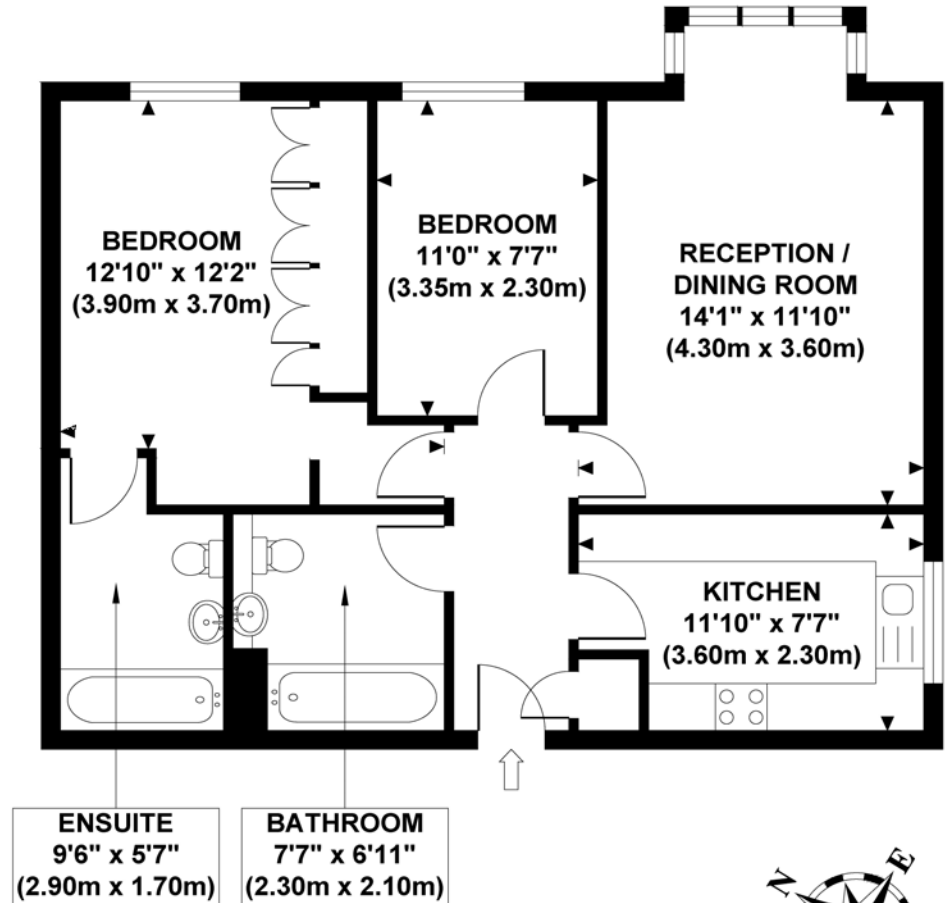
Situated on Victoria Road a wide tree lined street located off Pitshanger Lane's Award Winning High Street, with its excellent local amenities including a variety of local shops, restaurants, good primary schools, Pitshanger Park and local bus services to Ealing Broadway.

EPC RATING: C  
LOCAL AUTHORITY: Ealing  
COUNCIL TAX BAND: E  
LENGTH OF LEASE: 125 years from 29 September 1984

You may wish to instruct us about a related service, including: the sale and letting of residential and commercial property, the provision of mortgage and financial services, conveyancing and property management. Where you choose to use other services, Northfields or its employees may receive a fee or commission which will be disclosed to you.

## ESSAN HOUSE

Approximate Gross Internal Area  
664 sq ft / 61.70 sq m



**FIRST FLOOR  
GROSS INTERNAL  
FLOOR AREA 664 SQ FT**

Although every attempt has been made to ensure accuracy, all measurements are approximate and no responsibility is taken for any error, omission, or mid-statement. This floor plan is for illustrative purposes only and not to scale. Measured in accordance to RICS standards.  
GB PRO PHOTOS

Your local independent  
award winning estate agents



Pitshanger

1 Albert Terrace  
Ealing  
London W5 1RL  
Sales: 020 8998 3111  
E: pitssales@northfields.co.uk

020 8998 3111

[www.northfields.co.uk](http://www.northfields.co.uk)

**CONTACT**

*Us today*

TO FIND OUT

**MORE**