



Websters  
estate agents

# Vicarage Road, Twickenham, TW2 5TS

Semi Detached 5 bedroom family home with driveway parking for 3 cars and a 130 ft south facing garden in a highly regarded residential area. Situated less than 0.1 mile from Twickenham Green, 0.4 miles from Strawberry Hill train station and 0.6 miles from Twickenham town centre and Thames Riverside Radnor Gardens.

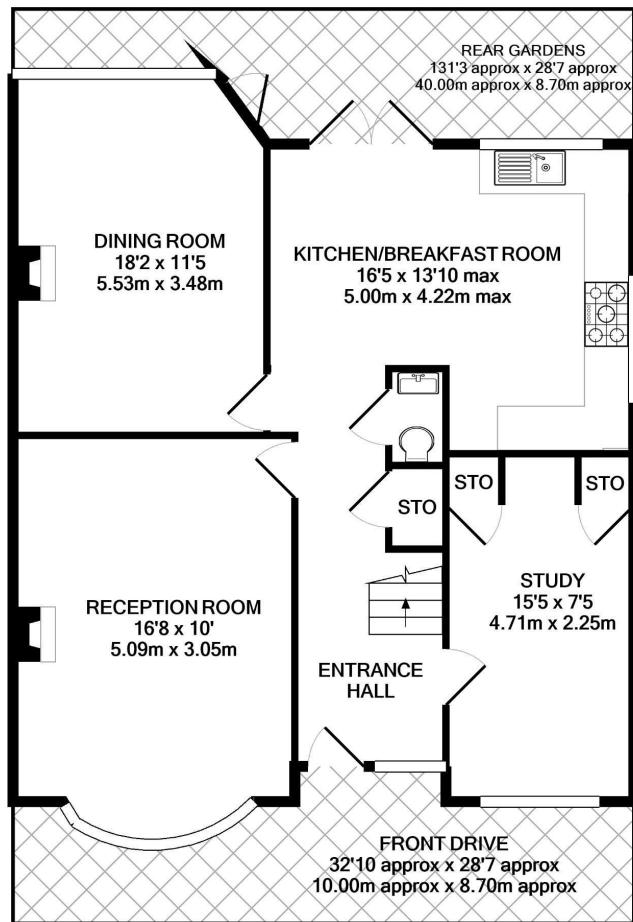
Tastefully presented to offer an impressive 2028 sq ft of living space over 3 floors with modern fixtures, fittings and floorings, double glazed windows and doors and potential to extend at the rear, reconfigure the layout and further enlarge the loft conversion (subject to Planning Permission and Building Regulations).

Entrance hallway leads to the bay fronted living room, the study, a w.c and the kitchen/breakfast room with access into the family/dining room. Doors in the kitchen and family room open onto the stunning garden with patios, large lawn, mature planting, shed storage and secure gated access from the side of the house. On the first floor are 4 bedrooms, one with an en-suite shower room, the family bathroom and stairs up to the main bedroom with an ensuite shower room and garden views.

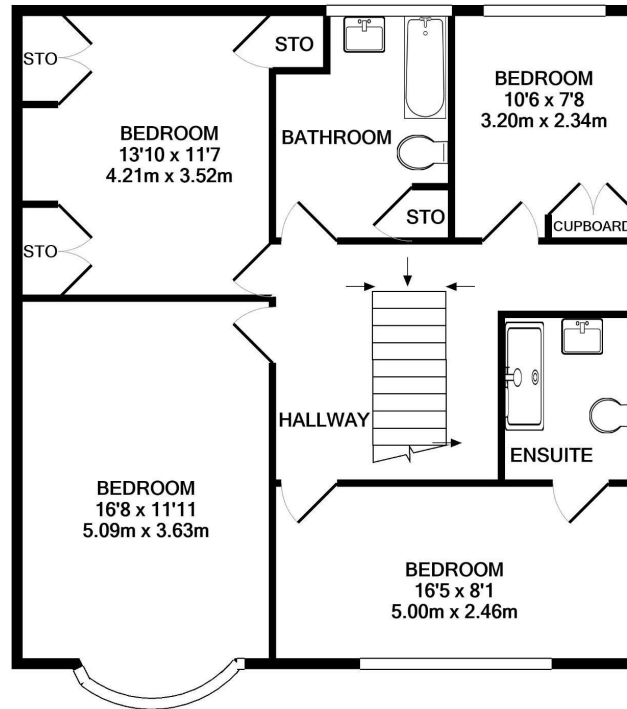
Located 0.1 mile from Archdeacon Primary and less than 0.6 miles from Trafalgar, St James, Waldegrave Girls/Co-ed Sixth Form and St Richard Reynolds Schools.  
EPC Rating E

- Semi Detached 2028 Sq Ft Home
- 5 Bedrooms and 3 Bathrooms
- 130 Ft South Facing Garden
- Driveway Parking for 3 Cars
- Potential to Extend (stpp)
- 0.1 Mile from Twickenham Green
- 0.4 Miles from Strawberry Hill Station
- Within 0.6 Miles of Popular Schools



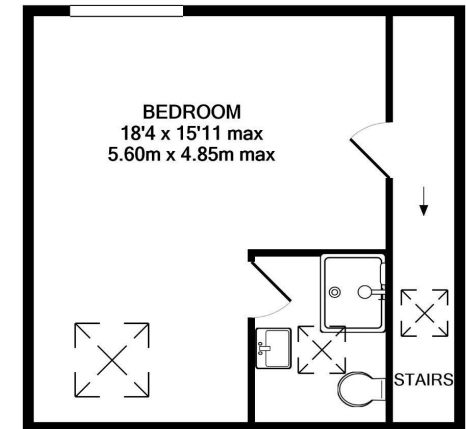


GROUND FLOOR  
APPROX. FLOOR  
AREA 849 SQ.FT.  
(78.9 SQ.M.)



1ST FLOOR  
APPROX. FLOOR  
AREA 820 SQ.FT.  
(76.2 SQ.M.)

TOTAL APPROX. FLOOR AREA 2028 SQ.FT. (188.4 SQ.M.)



2ND FLOOR  
APPROX. FLOOR  
AREA 360 SQ.FT.  
(33.4 SQ.M.)

Disclaimer

These particulars, whilst believed to be accurate are set out as a general outline only for guidance and do not constitute any part of an offer or contract. Intending purchasers should not rely on them as statements of representation of fact, but must satisfy themselves by inspection or otherwise as to their accuracy. We have not carried out a detailed survey nor tested the services, appliances and specific fittings. Room sizes should not be relied upon for carpets and furnishings. The measurements given are approximate. No person in this firm's employment has the authority to make or give any representation or warranty in respect of the property.

