



Websters
estate agents

63 St Margarets Grove, Twickenham, TW1 1JF

Attractive 4 bedroom mid terrace Victorian cottage in a central St Margarets village located just 300 metres from Moormead Park.

Immaculately presented throughout with a ground floor extension and loft conversion providing 1237 sq ft of adaptable and contemporary family living space over 3 floors.

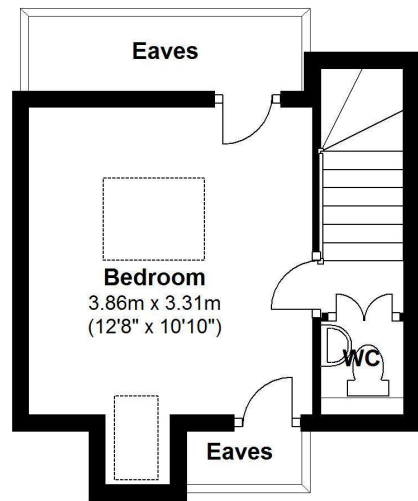
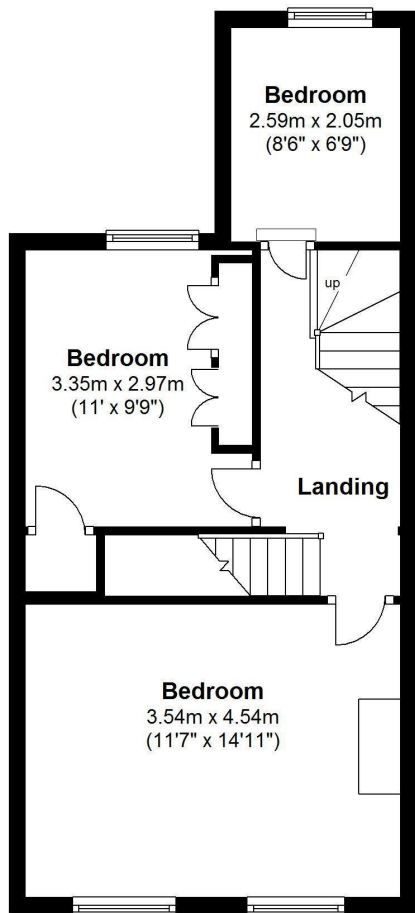
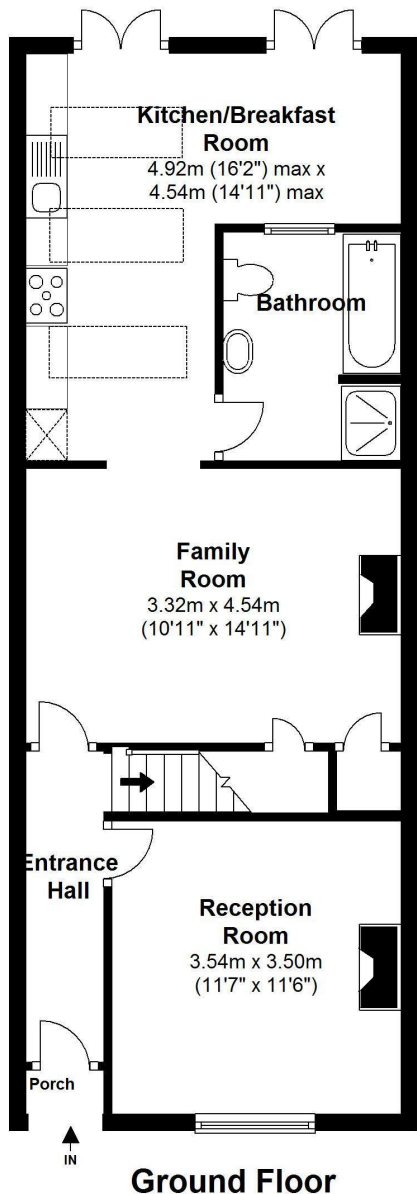
Entrance hallway leads to 2 separate reception rooms with the rear room opening into the luxury family bathroom and the light, airy and modern fully fitted kitchen/breakfast room. Two sets of double doors lead directly onto the lovely garden with a seating area, mature planting and lawn. On the first floor are 2 double and 1 single bedroom with stairs leading up to the 4th bedroom with eaves storage and a separate w.c.

Situated 300 metres from St Margarets train station and village shops and just 1 mile from Richmond upon Thames.
EPC Rating D

- Mid Terrace Family Home
- Immaculately Presented Throughout
- Extended on Ground Floor and Loft Converted
- 2 Reception Rooms
- Modern Kitchen/Breakfast Room
- 4 Bedrooms
- Luxury Family Bathroom and Separate W.C
- 300 Metres from St Margarets Station and Shops



St. Margarets Grove



Gross Floor area approx. = 1,237 Sq. Feet (115 sq. metres)

a Websters Estate Agents 36 Broad Street, Teddington, Middlesex TW11 8QY

t 020 8614 6000

e sales@mywebsters.co.uk w mywebsters.co.uk

Disclaimer

These particulars, whilst believed to be accurate are set out as a general outline only for guidance and do not constitute any part of an offer or contract. Intending purchasers should not rely on them as statements of representation of fact, but must satisfy themselves by inspection or otherwise as to their accuracy. We have not carried out a detailed survey nor tested the services, appliances and specific fittings. Room sizes should not be relied upon for carpets and furnishings. The measurements given are approximate. No person in this firm's employment has the authority to make or give any representation or warranty in respect of the property.

