



Websters  
estate agents  
For Sale

P  
K  
Residents  
permit  
holders  
only

Websters  
estate agents

SEYMOUR ROAD



# Seymour Road, Hampton Wick, KT1 4HN

First Floor 1 bedroom, Share of Freehold apartment in an attractive Victorian detached property with secure entry phone access and use of 2 communal lockable bike storage units. Situated just 0.1 mile from Hampton Wick Village shops and train station, 0.4 miles from Kingston town centre and 0.7 miles from Kingston mainline train station

With no onward chain and offering 395 sq ft of well proportioned, newly decorated living space with high ceilings, large sash windows and modern fixtures, fittings and floorings.

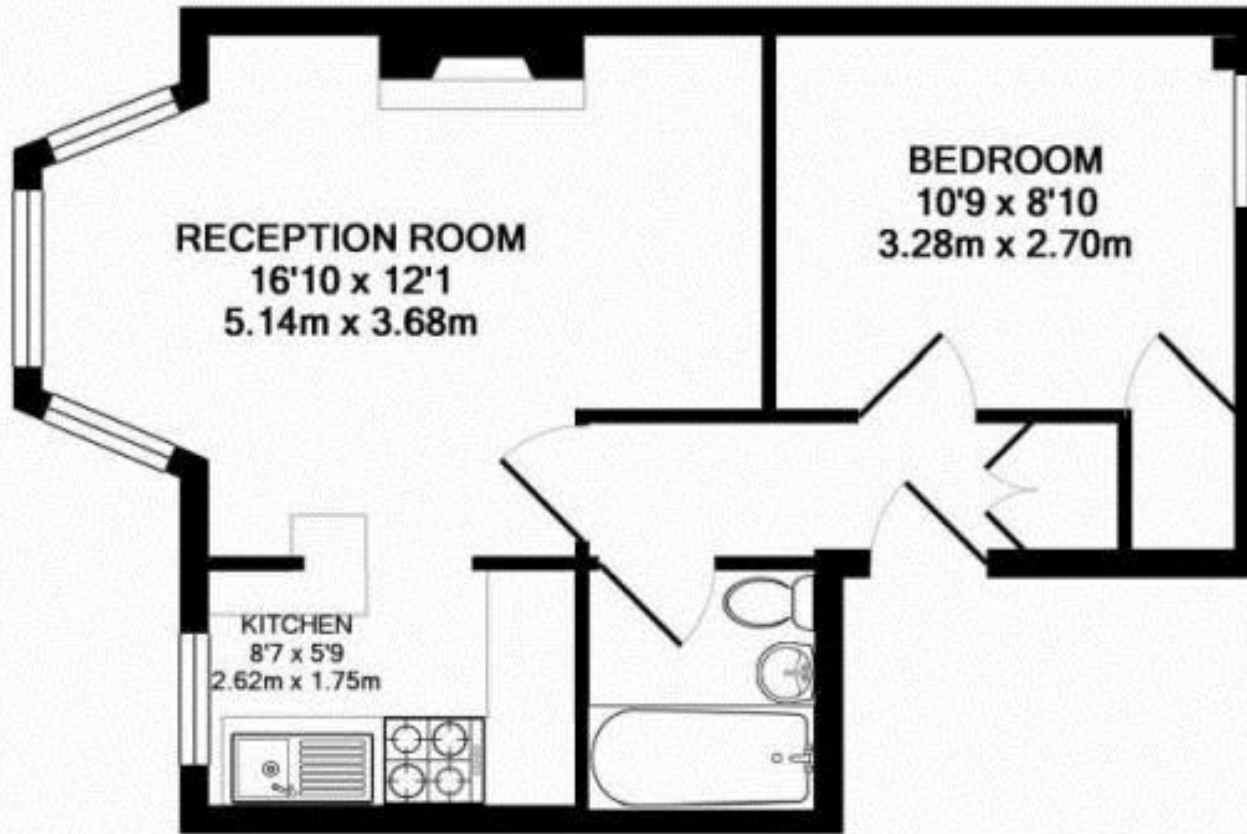
Entrance hallway leads to built in storage, the double bedroom, the bathroom and the spacious living room with a large bay window, feature fireplace, space for seating and dining and access into the fitted kitchen.

Located less than 0.4 miles from Bushy Park, Home Park and the River Thames with towpath walks towards Hampton Court Palace and Richmond upon Thames.

EPC Rating D

- First Floor 1 Bedroom Apartment
- Detached Victorian Property
- Share of Freehold
- No Onward Chain
- Modern Fitted Kitchen
- Bay Fronted Living Room
- 0.1 Mile from Hampton Wick Train Station





RECEPTION ROOM  
16'10 x 12'1  
5.14m x 3.68m

BEDROOM  
10'9 x 8'10  
3.28m x 2.70m

KITCHEN  
8'7 x 5'9  
2.62m x 1.75m

SEYMOUR ROAD, KT1  
TOTAL APPROX. FLOOR AREA 395 SQ.FT. (36.7 SQ.M.)

[a](#) Websters Estate Agents 36 Broad Street, Teddington, Middlesex TW11 8QY    [t](#) 020 8614 6000    [e](#) [sales@mywebsters.co.uk](mailto:sales@mywebsters.co.uk)    [w mywebsters.co.uk](http://mywebsters.co.uk)

**Disclaimer**

These particulars, whilst believed to be accurate are set out as a general outline only for guidance and do not constitute any part of an offer or contract. Intending purchasers should not rely on them as statements of representation of fact, but must satisfy themselves by inspection or otherwise as to their accuracy. We have not carried out a detailed survey nor tested the services, appliances and specific fittings. Room sizes should not be relied upon for carpets and furnishings. The measurements given are approximate. No person in this firm's employment has the authority to make or give any representation or warranty in respect of the property.

