



Northfields

CASTLEBAR PARK  
W5

£625,000

Ealing



# CASTLEBAR PARK, W5

£625,000



18ft Reception Room



Open Plan Kitchen



Three Bedrooms



Two Bathrooms



Garage

A wonderful three double bedroom/two bathroom second floor apartment with private garage set within a small purpose built development located close to both Pitshanger Village and Ealing Broadway. The property have been comprehensively refurbished to a high standard with stunning polished parquet and oak floors. There's also an impressive amount of quality built in wardrobes (all bedrooms) and built in storage cupboards. The flat is light, bright and welcoming with a 18ft x 15ft reception room with stylish open plan kitchen, a relaxing space with room for dining and lounging. All bedrooms can accommodate double beds, a bathroom and shower room completes the interior space. Being second floor, the property enjoys a good elevated aspect and has lovely views . Outside there's a well-kept communal garden and a garage is located to the rear in a separate block.

Warren Court is located on Castlebar Park, tucked in the residential streets between Ealing Broadway and Pitshanger Lane, which gives it access to both the transport connections in Ealing Broadway and the village feel of Pitshanger's shops and cafés. The beautiful wide open spaces of Pitshanger Park provide a place to enjoy the fresh air as does the communal garden which can be accessed from the side of the property. The A40 can be easily reached for motorway routes in and out of London and drivers will be keen to know that this home also comes with a private garage. Public transport links are available at nearby Ealing Broadway station which offers Central and District underground lines as well as mainline services to Paddington and Heathrow. The property also falls in the catchment for both North Ealing and Montpelier primary schools.

EPC RATING: C

LOCAL AUTHORITY: Ealing

COUNCIL TAX BAND: D

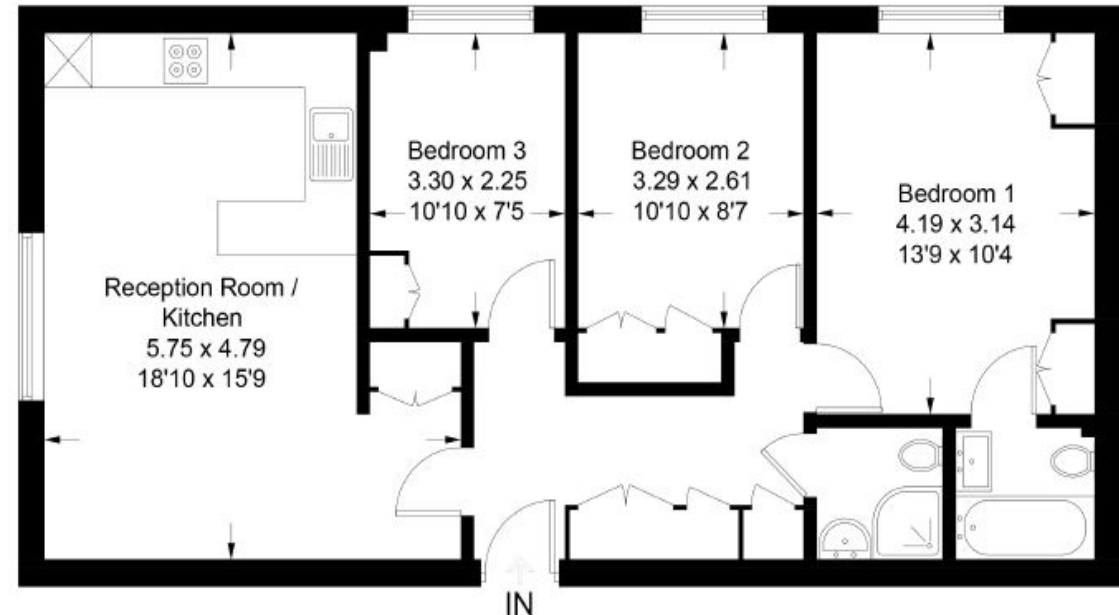
SHARE OF FREEHOLD

LENGTH OF LEASE: 250 years from June 2020 -

You may wish to instruct us about a related service, including: the sale and letting of residential and commercial property, the provision of mortgage and financial services, conveyancing and property management. Where you choose to use other services, Northfields or its employees may receive a fee or commission which will be disclosed to you.

## Warren Court

Approximate Gross Internal Area = 71.5 sq m / 770 sq ft



## Second Floor

Your local independent  
award winning estate agents



Pitshanger

1 Albert Terrace  
Ealing  
London W5 1RL  
Sales: 020 8998 3111  
E: pitssales@northfields.co.uk

020 8998 3111

[www.northfields.co.uk](http://www.northfields.co.uk)

**CONTACT**

*Us today*

TO FIND OUT

**MORE**