



**NORTHCOTE AVENUE
W5**

.....
£550,000

Ealing



NORTHCOTE AVENUE, W5

£550,000

NORTHCOTE APARTMENTS
Approximate Gross Internal Area
672 sq ft / 62.40 sq m



Large
Reception Room



Open Plan
Kitchen



Two Double
Bedrooms



Two Bathrooms



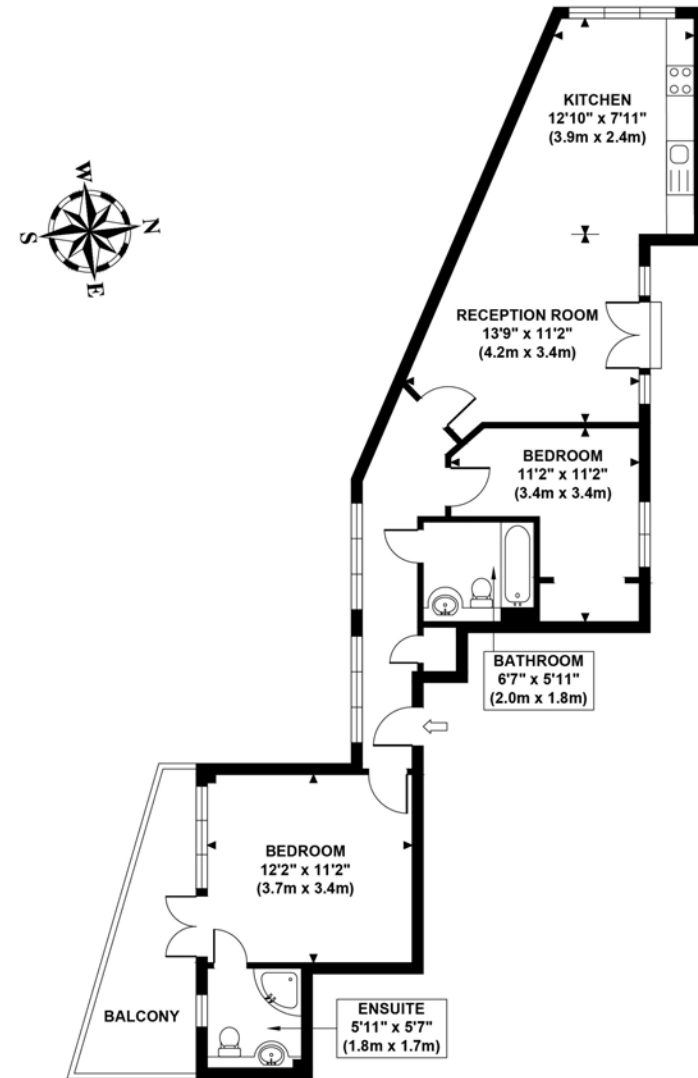
Allocated Parking

A generously proportioned two double bedroom apartment situated on the second floor of this well maintained development in the heart of Ealing Broadway. As you walk into the large reception room, the multiple windows and Juliet balcony flood this area with an abundance of natural light, giving you a true sense of space and airiness. In addition you have a fully integrated open plan modern kitchen with ample space for dining and entertaining. Also offering two bathrooms, a private terrace and off-street parking.

Only a short walk away is Ealing Broadway Station, giving easy access to the Central and District lines as well as mainline services, soon to be Crossrail. On your doorstep you have a mix of well-known retailers, restaurants and cafés meaning you won't have to travel far for dining or shopping excursions. Just a stone's throw away you will find the popular Walpole Park, with its café and ponds, it's perfect for picnics or afternoon strolls in the beautiful green open spaces of Ealing.

EPC RATING: C
LOCAL AUTHORITY: Ealing
COUNCIL TAX BAND: F
LENGTH OF LEASE: 125 years from 1 April 2003

You may wish to instruct us about a related service, including: the sale and letting of residential and commercial property, the provision of mortgage and financial services, conveyancing and property management. Where you choose to use other services, Northfields or its employees may receive a fee or commission which will be disclosed to you.



SECOND FLOOR
GROSS INTERNAL
FLOOR AREA 672 SQ FT

Although every attempt has been made to ensure accuracy, all measurements are approximate and no responsibility is taken for any error, omission, or mid-statement. This floor plan is for illustrative purposes only and not to scale. Measured in accordance to RICS standards.
GB PRO PHOTOS

Your local independent award winning estate agents



Ealing Broadway

20 New Broadway
Ealing W5 2XA
Sales: 020 8280 9600
E: ebsales@northfields.co.uk

020 8280 9600

www.northfields.co.uk

CONTACT

Us today

TO FIND OUT

MORE